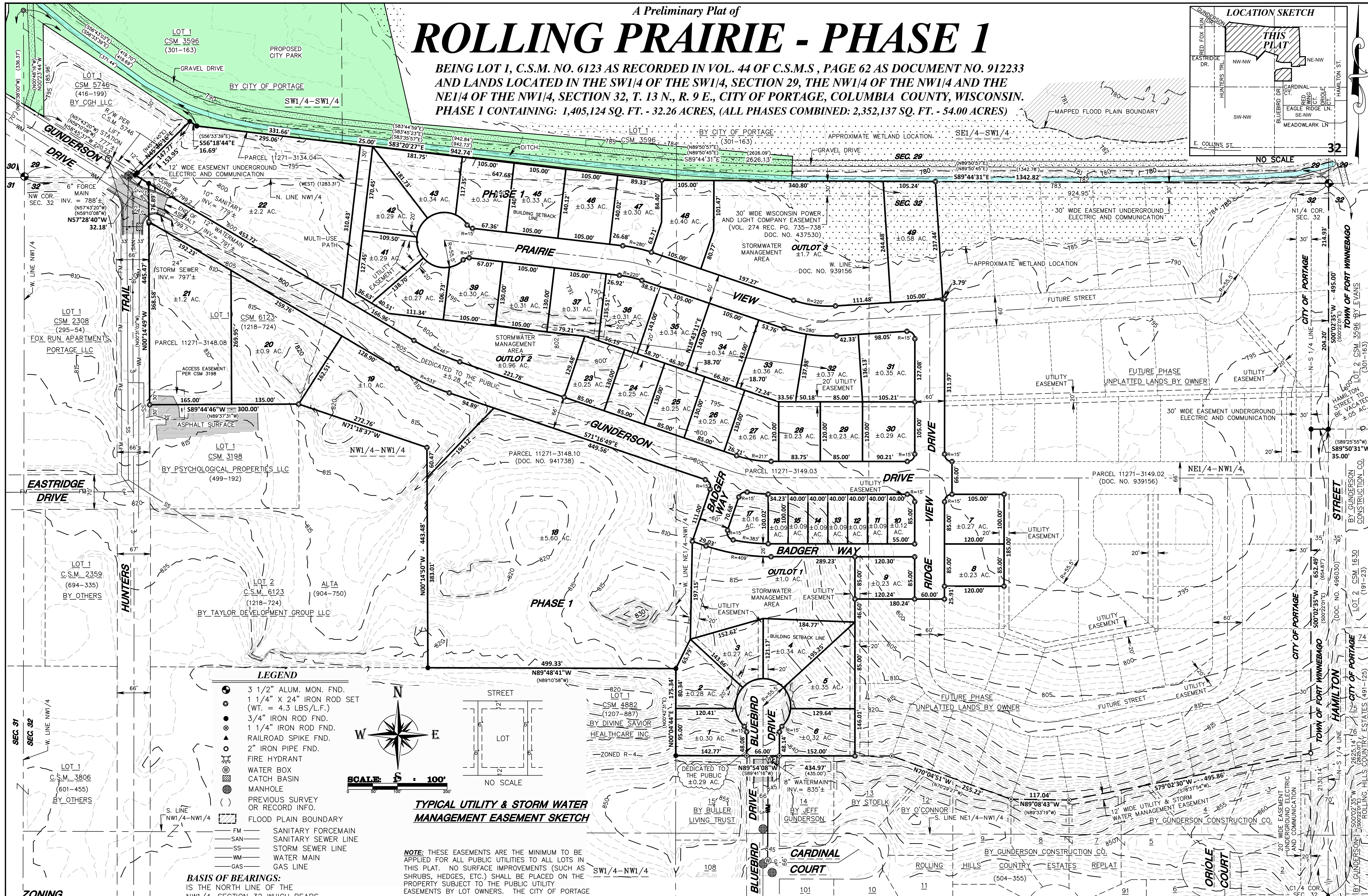
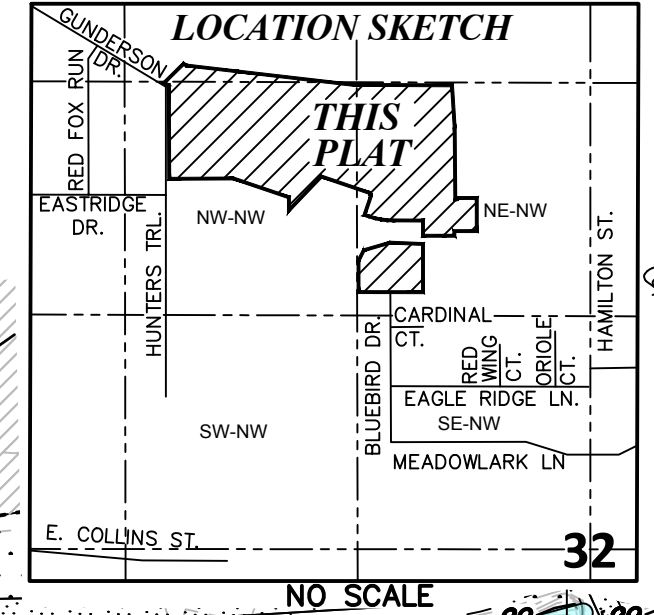
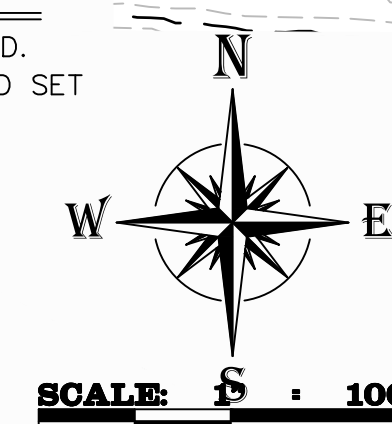


# A Preliminary Plat of ROLLING PRAIRIE - PHASE 1

BEING LOT 1, C.S.M. NO. 6123 AS RECORDED IN VOL. 44 OF C.S.M.S, PAGE 62 AS DOCUMENT NO. 912233 AND LANDS LOCATED IN THE SW1/4 OF THE SW1/4, SECTION 29, THE NW1/4 OF THE NW1/4 AND THE NE1/4 OF THE NW1/4, SECTION 32, T. 13 N., R. 9 E., CITY OF PORTAGE, COLUMBIA COUNTY, WISCONSIN. PHASE 1 CONTAINING: 1,405,124 SQ. FT. - 32.26 ACRES, (ALL PHASES COMBINED: 2,352,137 SQ. FT. - 54.00 ACRES)



- LEGEND**
- 3 1/2" ALUM. MON. FND.
  - 1 1/4" X 24" IRON ROD SET (WT. = 4.3 LBS./L.F.)
  - 3/4" IRON ROD FND.
  - 1 1/4" IRON ROD FND.
  - ▲ RAILROAD SPIKE FND.
  - 2" IRON PIPE FND.
  - FIRE HYDRANT
  - WATER BOX
  - CATCH BASIN
  - MANHOLE
  - ( ) PREVIOUS SURVEY OR RECORD INFO.
  - FLOOD PLAIN BOUNDARY
  - FM SANITARY FORCEMAIN
  - SAN SANITARY SEWER LINE
  - SS STORM SEWER LINE
  - WM WATER MAIN
  - GAS GAS LINE



**BASIS OF BEARINGS:**  
IS THE NORTH LINE OF THE NW1/4, SECTION 32 WHICH BEARS S89°44'31"E AS REFERENCED TO GRID NORTH COLUMBIA CO. COORDINATE SYSTEM NAD83(91).

**OBJECTING AUTHORITY**  
DEPARTMENT OF ADMINISTRATION

**APPROVING AUTHORITY**  
CITY OF PORTAGE  
COLUMBIA COUNTY



**NOTE:** THESE EASEMENTS ARE THE MINIMUM TO BE APPLIED FOR ALL PUBLIC UTILITIES TO ALL LOTS IN THIS PLAT. NO SURFACE IMPROVEMENTS (SUCH AS SHRUBS, HEDGES, ETC.) SHALL BE PLACED ON THE PROPERTY SUBJECT TO THE PUBLIC UTILITY EASEMENTS BY LOT OWNERS. THE CITY OF PORTAGE MAY USE THE PROPERTY SUBJECT TO THE EASEMENT FOR ALL PUBLIC UTILITY IMPROVEMENTS, BOTH SURFACE AND SUBSURFACE, INCLUDING, BUT NOT LIMITED TO SURFACE WATER DRAINAGE, STORM SEWER, STORM WATER DRAINAGE, SANITARY SEWER FACILITIES, ELECTRICAL, CABLE TV, TELEPHONE, ETC.

**NOTE:** CONTOURS SHOWN HEREON WERE PROVIDED BY GENERAL ENGINEERING COMPANY. CONTOUR DATA BASED ON NORTH AMERICAN VERTICAL DATUM, NAVD1988

**ZONING**  
R-1 SINGLE FAMILY  
B-3 INTERCHANGE BUSINESS  
RT-5 MULTI FAMILY  
RT RESIDENTIAL TRADITIONAL

**BASE FLOOD ELEVATION**  
FLOOD PLAIN BOUNDARY LINE AS DETERMINED FROM FIRM PANEL 55021C0254F EFF. 5/16/2016  
BASE FLOOD ELEVATION = 781.5

<b>OWNER/SUBDIVIDER</b> BURBANK FARMS LLC & GMF PROPERTIES LLC NS70 6TH COURT ENDEAVOR, WI 53930	<b>ENGINEER</b> ENGINEERING BY GENERAL ENGINEERING COMPANY 916 SILVER LAKE DRIVE PORTAGE, WI 53901	<b>SURVEYOR</b> SCOTT P. HEWITT P.O. BOX 373 625 E. SLIFER STREET PORTAGE, WI 53901
DATE	REVISION	BY
		APV'D

A Preliminary Plat of  
**ROLLING PRAIRIE - PHASE 1**

**GROTHMAN & ASSOCIATES S.C.**  
PROFESSIONAL SERVICES  
625 EAST SLIFER STREET, P.O. BOX 373 PORTAGE, WI 53901  
PHONE: PORTAGE: (608) 742-7788 SAUK: (608) 644-8877  
FAX: (608) 742-0434 E-MAIL: surveying@grothman.com  
(RED LOGO REPRESENTS THE ORIGINAL MAP)

FILE NO. 1121-743	PROJ. NO. 1121-743	DWG NO. 1121-743PRELIM
THIS INSTRUMENT DRAFTED BY T.K.		SHEET 1 OF 2